

Thursday 30 May 2.30 – 4pm, Scooter Treasure Hunt Fun

Ouseburn Parks Visitor Centre, Jesmond Dene (next to Millfield House Café)

Come along on your scooter to find the treasure in the Dene! You will need to look high and low to find your prize and bring your scooter. Just turn up on the day.

Friday 31 May, 1 – 3pm

Pond Dipping and Minibeast Trail

Ouseburn Parks Visitor Centre, Jesmond Dene (next to Millfield House Café)

A joint event with park staff and Sustrans. Take part in pond dipping and go on our Minibeast trail/walk at. This is a drop in event.



Family Events

March to May 2013

Saturday 16 March 1 – 3.30pm, Easter Treasure Hunt

Ouseburn Parks Visitor Centre, Jesmond Dene (next to Millfield House Café)

Come along for an Easter themed treasure hunt. You might even find the Easter bunny. There will be prizes for all participants. No booking needed.

Please contact emma.cockburn@sustrans.org.uk for further information.

Saturday 23 March 1 – 3.30pm, Tree Tales

Ouseburn Parks Visitor Centre, Jesmond Dene (next to Millfield House Café)

Sustrans and park staff have joined up to lead you on a fun filled walk! There will be activities and stories all about the trees in Jesmond Dene.

Suitable for children 5+. Booking essential.

Please phone 0191 281 2082 to book.

Tuesday 2 April 1 – 3pm, Little Animals

Pets Corner – Jesmond Dene

Find out about the animals in pets corner and take part in a trail and animal crafts all about baby animals. There will be opportunities to meet some of the smaller animals throughout the afternoon. This is a drop in event.

For more information phone 0191 281 2082.

Wednesday 3 April 10.30 – 11.30am, Tree Tots (for under fives), £2.50 per child

Ouseburn Parks Visitor Centre, Jesmond Dene (next to Millfield House Café)

Join us for our under 5's session in Jesmond Dene. This session will be about growing plants and flowers, with a story and variety of fun outdoor activities.

Booking essential. May not be suitable for babies. For more information and to book, phone 0191 281 2082.

Thursday 4 April 12 – 3pm, Nature Area Open Day

Jesmond Dene

(Across the River from Pets Corner – look out for the signs)

Come along and have a look around our Nature Area, take part in pond dipping, minibeast hunts and watch the birds at the feeding station. This is a drop in event and all children must be accompanied. Please contact the Visitor Centre for more information 0191 281 2082.



Tuesday 9 April 10 – 11.30am Adult Beginners Bike Ride

Ouseburn Parks Visitor Centre, Jesmond Dene (next to Millfield House Café)

A gentle 7 to 10 mile bike ride for adults with on-road and off road sections. Booking essential. Please contact emma.cockburn@sustrans.org.uk to book this.

Tuesday 9 April 1 – 2.30pm drop in, Water Safari

Ouseburn Parks Visitor Centre, Jesmond Dene (next to Millfield House Café)

Explore the ponds at Jesmond Dene with the Northumberland Wildlife Trust (NWT)'s People and Wildlife team. Recommended minimum age 5 years. £1.00 per child. Children must be accompanied by an adult. Contact NWT on 0191 284 6884 for more information.

Wednesday 10 April 1 – 3pm, Signs of Spring

Ouseburn Parks Visitor Centre, Jesmond Dene (next to Millfield House Café)

A joint event with park staff, Sustrans and ERIC North East to spot and record spring wildlife in Jesmond Dene. Book on a bike trail to spot signs of spring, or drop in for seed planting and to pick up a spring trail. Booking for bike trail essential. Please contact emma.cockburn@sustrans.org.uk to book this.

Thursday 11 April 1 – 2.30pm (Session starts at 1pm), Model Raft Races

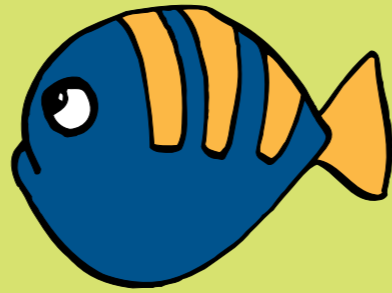
Ouseburn Parks Visitor Centre, Jesmond Dene (next to Millfield House Café)

Build your own model raft from natural materials with the Northumberland Wildlife Trust (NWT)'s People and Wildlife team. Recommended minimum age 5 years. Charge £2.50 per child. Children must be accompanied by an adult. Contact NWT on 0191 284 6884 for more information and to book your place.

Saturday 20 April 1 – 3pm, Signs of Spring

Ouseburn Parks Visitor Centre, Jesmond Dene (next to Millfield House Café)

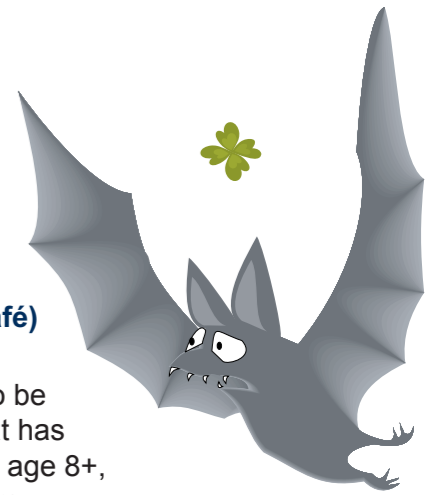
A joint event with park staff and Sustrans to spot and record spring wildlife in Jesmond Dene. Book on a bike trail to spot signs of spring, or drop in for seed planting and to pick up a spring trail. Booking for bike trail essential. Please contact emma.cockburn@sustrans.org.uk to book this.



Saturday 11 May (Evening – time to be confirmed), Lets Go Batty!

Ouseburn Parks Visitor Centre, Jesmond Dene (next to Millfield House Café)

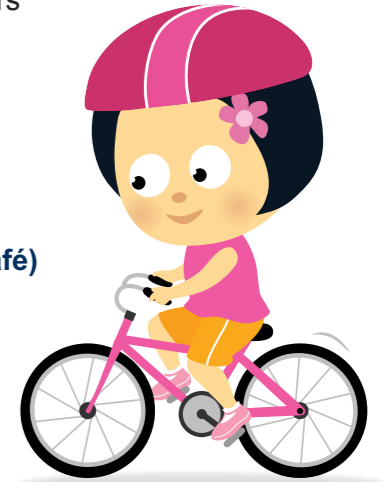
Learn about the different species of bats that live in the UK, then we'll set out for a walk and see which ones we can find. Don't forget your torch! We will also be running a moth trap throughout the evening and we will have a look to see what has been caught on our return. There will be a charge of £4 per person. Suggested age 8+, children must be accompanied. **Booking essential.** Please contact the Rangers on 0191 281 2082 to book your place and for access details.



Saturday 18 May 3 sessions: 1 – 2pm, 2.15 – 3.15pm, 3.30 – 4.30pm Stabiliser Free Session

Ouseburn Parks Visitor Centre, Jesmond Dene (next to Millfield House Café)

Would your child like to learn to cycle? Then book onto this hour long session which has fantastic success rates. Please take off stabilisers and pedals beforehand, but bring the pedals with you in a bag. Children (under 16 years) must be accompanied by an adult. Booking essential. Please contact emma.cockburn@sustrans.org.uk to book this.



Wednesday 29 May 1 – 3pm Pets Corner – Jesmond Dene

Find out about the animals in pets corner and take part in a trail and animal crafts. There will be opportunities to meet some of the smaller animals throughout the afternoon. This is a drop in event. For more information phone 0191 281 2082.



Thursday 30 May 1pm – 2.30pm (Session starts at 1pm) Model Raft Races

Ouseburn Parks Visitor Centre, Jesmond Dene (next to Millfield House Café)

Build your own model raft from natural materials with the Northumberland Wildlife Trust (NWT)'s People and Wildlife team. Recommended minimum age 5 years. Charge £2.50 per child. Children must be accompanied by an adult. Contact NWT on 0191 284 6884 for more information and to book your place.

